



# WORKPLACE GIVING

## **SMALL CHANGE MAKING A HUGE IMPACT**

Together we can help support those  
in urgent need of medical care.

# WHO IS MEDECINS SANS FRONTIERES?



© Anthony Jean/SOS MEDITERRANEE

Médecins Sans Frontières (Doctors Without Borders) is the world's leading independent organisation for medical-humanitarian aid and exists to save lives by providing medical aid where it is needed most – in armed conflicts, epidemics, famines and natural disasters. All these situations call for a rapid response with specialised medical and logistical help.

In addition to our emergency assistance, we also run longer-term projects, tackling health crises and supporting people where the need is greatest. Wherever our teams are working their goal is the same; to provide essential medical aid to those who need it most, regardless of race, religion, gender or political affiliation.



# WHAT DO WE DO?



© Nichole Sobiecki



We provide relief after natural disasters such as floods or earthquakes.



We treat victims of conflict.



We run emergency feeding programs during nutritional crises.



We tackle neglected diseases such as malaria, HIV/AIDS, tuberculosis and kala azar.



We coordinate mass vaccination programs to prevent epidemics spreading.



We train local medical staff.

Read more about our work at [msf.org.au](https://www.msf.org.au)

# YOU CAN HELP US THROUGH WORKPLACE GIVING



© Sara Creta/MSF

## WHAT IS WORKPLACE GIVING?

Workplace Giving allows you to make a regular donation to Médecins Sans Frontières (Doctors Without Borders) directly from your gross salary, immediately reducing the amount of income tax deducted from your salary,

with no need to keep any receipts! It is quick to set up, you can alter or cancel at any time with no lock in contracts and it is received at minimal cost to Médecins Sans Frontières, making a real difference to our patients in over 70 countries.

# HOW TO GET INVOLVED



© Isabel Corthier/MSF

## FOLLOW THESE SIMPLE STEPS



Complete the registration form and select how much you would like to contribute each pay

Give your form to the team that manages Workplace Giving

Your chosen donation is deducted from your salary each pay cycle before your tax

Your generous donation goes straight to Médecins Sans Frontières

You will receive a tax benefit every pay day

# HOW WILL MY CONTRIBUTIONS HELP?



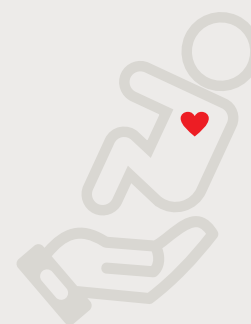
© Pierre-Yves Bernard/MSF

**NO MATTER THE SIZE, YOUR GENEROUS REGULAR DONATIONS WILL HELP US DELIVER EMERGENCY MEDICAL CARE TO PATIENTS, REGARDLESS OF POLITICS, RACE, RELIGION, OR ETHNICITY IN OVER 70 COUNTRIES.**

**Here are just some of the lifesaving items you could help provide;**

**\$1.50 A MONTH  
FOR A YEAR =**

**1 SAFE  
DELIVERY  
KIT**



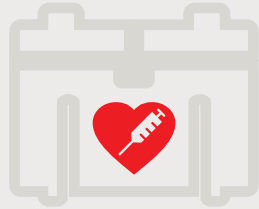
For uncomplicated births that do not require surgical intervention, a safe delivery kit provides all the medical instruments needed for childbirth. Included in the kit are forceps to tie up the umbilical cord, scissors for cutting it, sterile gauze and a basket for sterilizing the tools.

\*Costings are approximates

# HOW WILL MY CONTRIBUTIONS HELP?

**\$4.20 A MONTH  
FOR A YEAR =**

**1 COLD  
BOX  
VACCINE  
CARRIER**



Each carrier helps to ensure that vaccines are kept at an optimum low temperature from the time they leave the facility where they're manufactured, until someone receives their inoculation. Packed to capacity, they can hold up to 1,000 doses of some kinds of vaccines.

**\$7.20 A MONTH  
FOR A YEAR =**

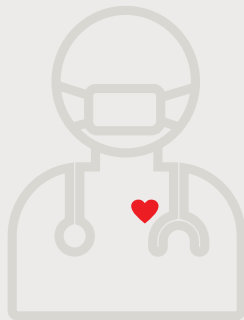
**1 WEEK OF  
TREATMENT FOR  
13 CHILDREN  
SUFFERING FROM  
MALNUTRITION**



Ready-to-Use Therapeutic Food (RUTF) can cure up to 90% of children with uncomplicated malnutrition. RUTF provides the essential vitamins, minerals, fat and proteins children need to survive and grow properly. Formulated in a peanut-milk paste that children find tasty and easy to eat, RUTF helps mothers provide nourishment for their children.

**75c A DAY  
FOR A YEAR =**

**SEND A  
SURGEON  
TO THE  
FIELD  
FOR 3 DAYS**



You can help send surgeons on short, intense missions following or during acute emergencies where there are many men, women and children suffering from traumatic injuries. A surgeon's skills are urgently needed after disasters such as an earthquake, or in areas of active conflict where there are high numbers of casualties from violent attacks.

**\$1.20 A DAY  
FOR A YEAR =**

**1 FAMILY  
TENT**



Shelter provides security, safety and protection from the elements and protects from disease. It's also important for human dignity, to sustain family and community life and to enable people to recover as quickly as possible from the effects of a natural disaster.

\*Costings are approximates



# HELP PEOPLE IN NEED

## SIGN UP TO WORKPLACE GIVING TODAY

For more information, please contact  
[workplace.giving@sydney.msf.org](mailto:workplace.giving@sydney.msf.org)

Or visit us at  
[www.msf.org.au/workplace](http://www.msf.org.au/workplace)

You can also find us on

